



Crystal Line

NATURAL STONES

The number 1 in texture and decorative effects, offering the optimal cost-benefit ratio!

Crystal Line

NATURAL STONES



WATER-REPELLENT FINISH FOR INTERIOR/EXTERIOR APPLICATION



SIMPLE APPLICATION



ELEGANCE AND REFINEMENT



SUPERB FINISH

Martins Tintas introduces the Crystal line, featuring a natural stone texture that merges refinement and sophistication with a classic yet inviting aesthetic. With 12 exceptional combinations, this versatile product transforms spaces, establishing a dialogue between the timeless and the contemporary, thereby creating harmonious and elegant environments. The minerals comprising the Crystal line produce a distinctive effect, characterized by a flawless finish and details that captivate at first glance. This texture is crafted to evoke sensations of well-being and fulfillment. Additionally, the natural stones employed ensure high durability and stability, maintaining their original attributes over time, thus providing enduring beauty and an unparalleled visual experience.

APPLICATION

The application is performed exclusively with a stainless steel trowel to prevent oxidation (rust) and potential contamination during the process. Given that this product is composed of natural raw materials, we advise against mixing different batches in the same area due to the significant risk of color variations.

Touch dry in four hours.

FINAL DRYING TIME: 72 HOURS

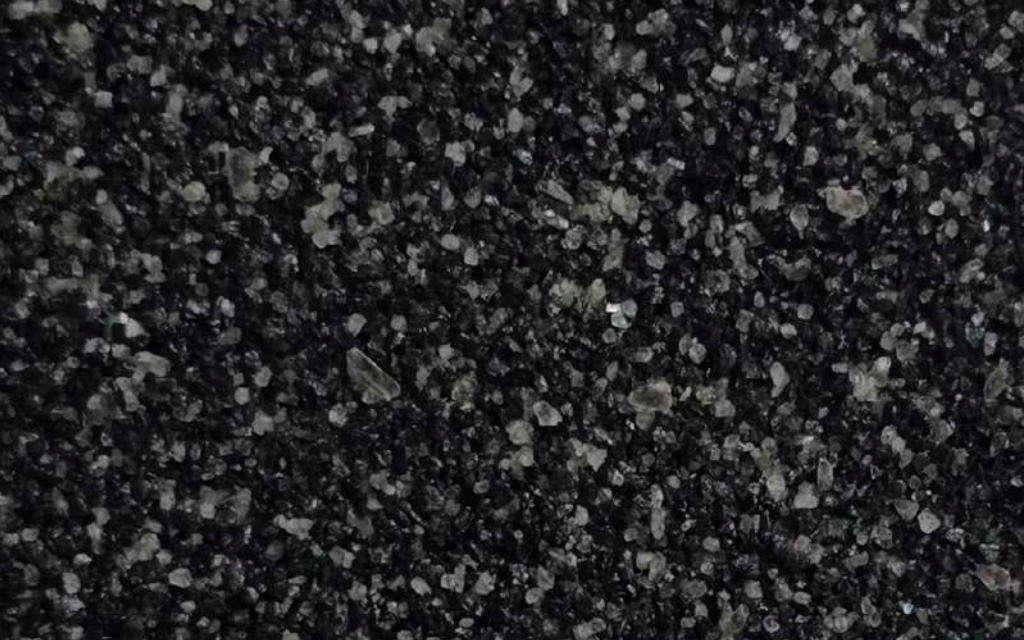
NOTE: - WE SUGGEST UTILIZING A PRIMER IN A SHADE THAT COORDINATES WITH THE TEXTURE.

PERFORMANCE

Bucket or Barrel of Natural Stones (22kg) - Bucket or Barrel of Primer (15L) - Coverage up to 75m²
(Proportion: For every 15 buckets or barrels of natural stones (22kg each), utilize 1 bucket of primer (15L).
Gallon of Natural Stones (5.6kg) - Coverage up to 1.3m² (18m²) - Gallon of Primer (3.6L)

NOTE - This product requires 120 days to achieve complete curing as a result of exposure to water (whitening).

If the client prefers to circumvent this issue, a colorless, solvent-based resin may be applied no sooner than four days following the Crystal application.



CRYSTAL MOSCOW

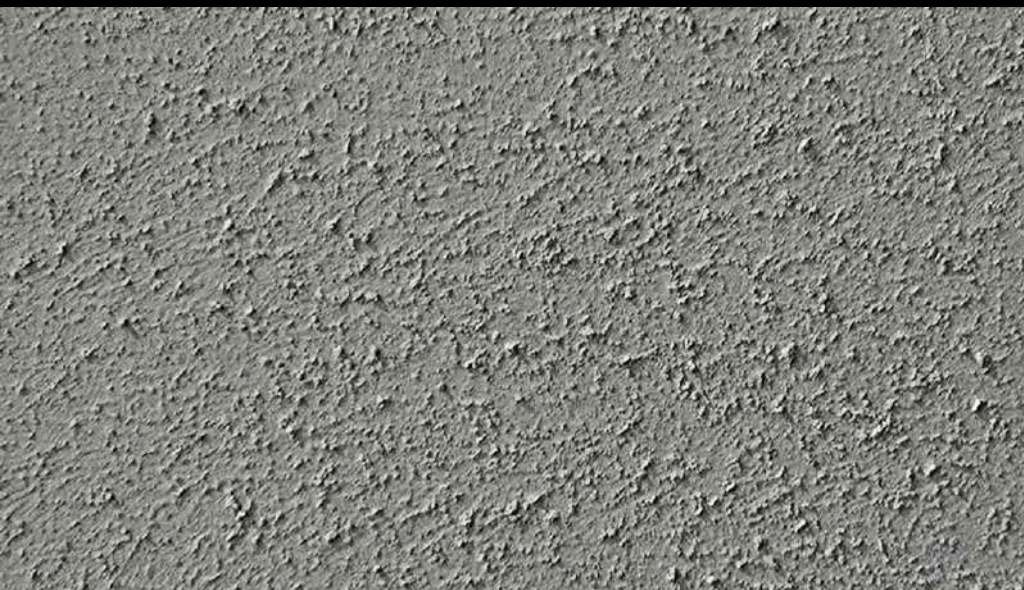
CORRESPONDING PRIMER FOUNDATION





CRYSTAL PARIS

CORRESPONDING PRIMER FOUNDATION





CRYSTAL LISBON

CORRESPONDING PRIMER FOUNDATION





CRYSTAL PRAGUE

CORRESPONDING PRIMER FOUNDATION





CRYSTAL LONDON

CORRESPONDING PRIMER FOUNDATION





CRYSTAL AMSTERDAM

CORRESPONDING PRIMER FOUNDATION





CRYSTAL ROME

CORRESPONDING PRIMER FOUNDATION





CRYSTAL ATHENS

CORRESPONDING PRIMER FOUNDATION





CRYSTAL BERLIN

CORRESPONDING PRIMER FOUNDATION





CRYSTAL MATRIARCHS

CORRESPONDING PRIMER FOUNDATION





CRYSTAL BRUSSELS

CORRESPONDING PRIMER FOUNDATION





CRYSTAL VIENA

CORRESPONDING PRIMER FOUNDATION





- WATER-RESISTANT
- EXTERIOR AND INTERIOR
- SIMPLE APPLICATION
- ELEGANCE AND REFINEMENT
- PIGMENTED SURFACE

APPLICATION

TO EXERT PRESSURE ON THE WALL: UTILIZE A STEEL TROWEL OR SPATULA.

FOR THIS PURPOSE: PLASTIC TROWEL, SPATULAE

FINISH

VIBRANT, RUSTIC, WITH SUBTLE GLIMMERS.

DILUTION

READY FOR USE. IF NEEDED, DILUTE UP TO 3% WITH POTABLE WATER.

COATS

ONE COAT IS ADEQUATE; HOWEVER, DEPENDING ON THE WALL'S UNEVENNESS, A SECOND COAT MAY BE REQUIRED FOR AN IMPROVED FINISH.

DRYING

TOUCHDOWN: 6
HOURS FINAL: 72
HOURS
COMPLETE
RECOVERY: 30 DAYS

PERFORMANCE

PLASTER, GYPSUM, PVA COMPOUND, ACRYLIC COMPOUND, FIBER CEMENT, AND FINE PLASTER.
6.5 TO 8.5 M² / 23 KG

NOTE: AVOID CREATING SEAMS IN THE MIDDLE OF THE WALL, AND REFRAIN FROM SPRAYING WATER TO CONTINUE THE APPLICATION.



CRYSTAL BLACK

CORRESPONDING PRIMER FOUNDATION





CRYSTAL WHITE

CORRESPONDING PRIMER FOUNDATION





www.martinstintas.com.br



[martinstintas](#)



[martinstintas](#)



(19) 3665-5378