




CATALOG OF PRODUCTS



[martinstintas](#) 

[martinstintas](#) 

(19) 3665-5378 

www.martinstintas.com.br 

INDEX

SUPPLEMENTARY INFORMATION

Field Delimitation	1
Wall Primer	2
Primer Foundation	3
Anti-Aging Gel	4
Reflective Gel and Reflective Gel Plus	5
Liquibrilho	6
MARTINSPREN Waterproofing for Slabs: 10-in-1	7
MARTINSPREN 10-in-1 Wall Waterproofing Solution.....	8
Acrylic Medium	9
Leveling Compound	10
PVA adhesive paste	11
Microcoating	12
Acrylic Waterproofing Resin for Roofing Tiles	13
Acrylic Sealant	14
Chalk and Chalk Plus Paint.....	15
Acrylic Waterproofing Coating	16

2. ACRYLIC PAINTS

Acrylic Refinement Liquid Elastomer	17
Standard Performance Acrylic	18
Premium Acrylic Latex Flooring and Facades	19
Inove Acrylic Latex Flooring Paint	20
Professional Latex	21
Acrylic Latex	22
Super Economical Latex Paint.....	23
Premium Sovereign Acrylic	24
Sovereign Premium Semi-Gloss Acrylic Paint	25

3. TEXTURES

Charred Cement	26
Bromate Texture and Noble Bromate with Gloss #16 20 25 30	27
Textura Grafimartins, Grafimartins Shine, and Grafimartins Shine Plus #10 12 14 20.....	28
Granfino and Granfino Ultra textures #16, #20, #25, #30	29
Sleek Surface.....	30
Textured Aesthetic.....	31
Rustic or Designer Aesthetic	32
Topaz Texture	33
Zafira Nobre and Zafira Nobre Plus Texture #25	34

4. NATURAL STONES

CRYSTAL LINE NATURAL GEMSTONES.....	35
VARIATIONS	36
CRYSTAL BLACK FINISH	37
CRYSTAL WHITE FINISH	38

5. Solvent Pipeline

STANDARD SYNTHETIC ENAMEL	39
SYNTHETIC ENAMEL DIRECT APPLICATION	40
ON RUST INDUSTRIAL/AUTOMOTIVE SYNTHETIC ENAMEL	41
SOLVENTS	42



FIELD DELINEATION



SUPERB FINISH



ELEVATED RESISTANCE



SIMPLE APPLICATION



WATER-BASED

Colors: Ivory

Feature: Water-soluble field marking paint.

Surfaces: Turf

Application: Roller brush made of wool or microfiber.

Finish: Matte.

Dilution: Prepared for use

Coats: Two to three coats.

Drying time: a total of 5 hours

Warranty: Two years from the date of manufacture.

Available Packaging: 18-Liter Can

For additional information regarding this product, please visit:

 <https://www.martinstintas.com.br/produto/demarcacao-para-campo/>



WALL PREPARATION PRIMER



EXTERIOR AND
INTERIOR



MINIMAL ODOR



WATER-BASED



Enhances ink adhesion.

Colors: Transparent

Characteristic: This acrylic additive is designed to enhance absorption uniformity, seal surfaces, and increase the cohesion of both porous external and internal surfaces. It effectively blocks alkalinity on surfaces such as weak plaster, new concrete, peeling paint, whitewashed walls, and general wall areas. Its formulation incorporates advanced technology with a low odor, ensuring a pleasant and comfortable application experience.

Facilitates effortless penetration into surface pores, enhancing adhesion and overall performance.

Surfaces: Newly plastered surfaces should be treated with Martins Acrylic Sealer to standardize absorption, thereby minimizing paint usage and enhancing both the aesthetic and durability of the finish. For "weak" surfaces—such as fragile plaster, whitewash, or sun-bleached paint—apply Martins Wall Primer to fortify them. It is essential that the surface is solid, cohesive, clean, dry, and devoid of dust, grease, oil, soap, or mold prior to any application.

Finish: Achromatic.

Dilution: 50% to 100% with drinking water.

Coats: one coat

Drying time: Touch dry: 60 minutes / Complete drying: 4 hours

Yield: Plaster, gypsum, fiber cement, concrete blocks, and fine mortar:

Coverage: 150 to 200 m², 18 L per application.

Coverage: 120 to 140 m², 16 L per coat.

Coverage of 110 to 120 m², 14 liters per coat.

Warranty: Two years from the date of manufacture.

Available Packaging: 16L Barrel / 14L Can / 18L Bucket / 3.6L Gallon / 900 mL

For additional information regarding this product, please visit:



<https://www.martinstintas.com.br/produto/fundo-preparador-de-paredes/>



PRIMER CONTEXT



EXTERIOR AND
INTERIOR



SUPERB FINISH



SIMPLE APPLICATION



ENHANCED ADHESION AND
PERFORMANCE

Color: Standard reference hue

Feature: Primer is an acrylic formulation designed for both interior and exterior walls. It effectively seals and equalizes the absorption of various surfaces, including plaster, concrete blocks, exposed concrete, fiber cement, fine mortar, leveling compound, gypsum, and drywall. When applied as a primer on unsealed surfaces, it is user-friendly and, owing to its high filling capacity, enhances the porosity of the substrate, thereby improving the adhesion and performance of the finishing product, whether it be Crystal Texture – Natural Stones or conventional textures. It is important to note that this product serves solely as a primer, not a finish.

Surfaces:

Surfaces should be treated with Martins Primer (appropriate color) to equalize absorption, thereby minimizing paint usage and enhancing the aesthetic and durability of the finish. For "weak" surfaces, such as fragile plaster, whitewash, or sun-bleached paint, apply Martins Wall Primer to fortify them. It is essential that the surface is solid, cohesive, clean, dry, and devoid of dust, grease, oil, soap, or mold prior to any application.

Finish

Gloomy and Rugged

Dilution

Up to 20% with drinking water.

Coats

2 coats

Drying

Touch dry: 60 minutes. Between coats: 2 hours. Final drying: 6 hours.

Performance

Plaster, gypsum, fiber cement, concrete blocks, and fine mortar.

900 ml – 4.5 to 5 m² per liter per coat

3.6 L – 18 to 20 m² per coat per gallon

15 L – 65 to 75 m² per coat/bucket. NOTE: Product yield will significantly depend on the overall condition of the wall and the application techniques employed. Minimize waste.

Validity

2 years from the date of production

Packaging

900 ml, 3.6 l, 15 l.

For additional information regarding this product, please visit:



<https://www.martinstintas.com.br/produto/fundo-primer/>



AGING GEL



EXTERIOR AND
INTERIOR



SUPERB FINISH



SIMPLE APPLICATION



READY FOR UTILIZATION

Cor
White liquid / colorless dry coating

Feature:

Aging Gel is a multifaceted product designed to deliver an array of painting effects on both interior and exterior masonry walls. It is ideal for enhancing water repellency and producing staining and aging effects across various textures, including smooth, rustic, textured, brominated, fine-grained, and sprayed surfaces. The base is specifically formulated for tinting within any tinting system or with water-based dye tubes.

Surfaces:

Preparing the wall (ABNT 13245): Prior to commencing preparation, the wall must be clean, dry, devoid of any marks or stains from grease or oil, free from mold, moisture, and loose particles. IN ALL CASES, THOROUGHLY REVIEW ALL RECOMMENDATIONS ON THE PRODUCT PACKAGING, PARTICULARLY THE DRYING TIME BETWEEN COATS.

Finish

The preferred hue featuring a subtle satin finish.

Dilution

Prepared for utilization

Coats

1 to 2 coats. Note: This may vary based on the preferred finish of the stain.

Drying

Touch dry: 2 hours. Between coats: 4 hours. Final drying: 24 hours.

Income

0.9 liters covers an area of up to 15 m² per coat.

3.6 liters covers an area of up to 60 m² per coat.

Validity

2 years from the date of production

Packaging

0.9 liters or 3.6 liters.

For additional information regarding this product, please visit:



<https://www.martinstintas.com.br/produto/gel-envelhecedor/>



REFLECTIVE GEL AND REFLECTIVE GEL PLUS



EXTERIOR AND
INTERIOR



SUPERB FINISH



SIMPLE APPLICATION



READY FOR UTILIZATION

Color: White liquid / colorless dry coating

Characteristic: Reflective Gel is a product designed to impart a shimmering finish to a variety of surfaces, including walls previously coated with acrylic paint, textured or pre-painted surfaces, and decorative items. Its formulation includes sparkling crystals that contribute points of brilliance, sophistication, and elegance to both environments and decor.

Reflective Gel: Exhibits smaller, glimmering spots.

Reflective Gel Plus: Provides enhanced luster.

Surfaces

New plaster surfaces should be treated with Martins Acrylic Sealer to ensure uniform absorption, thereby minimizing paint usage and enhancing the aesthetic and durability of the finish. For "weak" surfaces—such as fragile plaster, whitewash, or sun-bleached paint—apply Martins Wall Primer to fortify them. When it is necessary or desired to level surfaces, utilize Martins PVA Putty (for interior applications) or Martins Acrylic Putty (suitable for both interior and exterior use). It is essential that the surface is firm, cohesive, clean, dry, and devoid of dust, grease, oil, soap, or mold prior to any application.

Application

Paintbrush, wool roller, or paintbrush.

Finish

Lustrous satin finish with glimmering accents.

Dilution

Prepared for utilization

Coats

1 to 2 layers.

Note: Apply additional coats to enhance the intensity of the shine.

Drying

Touch dry: 2 hours. Between coats: 6 hours. Final drying: 72 hours.

Packaging

0.9 liters or 3.6 liters.

Income

0.9 liters covers an area of up to 6 m² per coat.

3.6 liters covers an area of up to 24 m² per coat.

Validity

Two years from the date of manufacture.

For additional information regarding this product, please visit:



<https://www.martinstintas.com.br/produto/gel-refletivo-e-gel-refletivo-plus/>



LIQUIBRILHO



EXTERIOR AND
INTERIOR



SUPERB FINISH



SIMPLE APPLICATION



READY FOR UTILIZATION

Cor
White liquid / colorless dry coating

Feature: LiquiBrilho is a product that, when combined with latex paint in the final coat, imparts a satin to semi-gloss finish, enhancing washability and durability. It is ideal for modifying the gloss of acrylic latex paints on both interior and exterior walls.

Surfaces
Preparing the wall (ABNT 13245): Prior to commencing preparation, the wall must be clean, dry, devoid of any marks or stains from grease or oil, free from mold, moisture, and loose materials.
In all instances, meticulously review all recommendations on the product packaging, particularly the drying time between applications.

Finish
The selection of finish is contingent upon the preferred sheen.

Dilution
Product is ready for use.

Coats
Used in conjunction with the paint in the final coat.

Drying
Depending on the type of finish employed.

Income
Depending on the type of finish employed.

Validity
2 years from the date of production

Packaging
3.6 liters and 18 liters.

For additional information regarding this product, please visit:

 <https://www.martinstintas.com.br/produto/liquibrilho/>

SUPPLEMENTARY INFORMATION



MARTINSPREN WATERPROOFING FOR SLABS 10-IN-1



ELEVATED RESISTANCE



WATERPROOF



SIMPLE APPLICATION



THERMAL COMFORT

Colors: White (Customized to meet customer specifications).

Feature:

It is a cold-applied, seamless, ready-to-use liquid membrane composed of acrylic, applied on-site. It envelops the surface with a protective layer, creating a waterproof membrane, and delivers exceptional elasticity, flexibility, and adhesion, along with remarkable durability and high resistance to weathering. It offers an outstanding finish and reflects solar rays, thereby diminishing some of the heat absorbed by the structure.

Surfaces:

SLABS: The surface must be thoroughly cleaned, dried, and devoid of dust, varnishes, paints, release agents, waxes, fungi, mold, or any substances that could compromise the adhesion of Martins PREN Laje.

Application: Brush, paint roller, or bristle broom.

Finish: Matte white.

Dilution: For the initial coat, dilute with a maximum of 10% clean water.
For subsequent applications, use the product in its undiluted form.

Coats:

Three coats are required to attain the recommended thickness. Drying times are as follows: Touch dry: 4 hours; Between coats: 6 hours; Final: 12 hours.

Performance:

Approximate consumption: 1.2 kg/m² per bucket (18 kg) in exposed areas, with or without polyester mesh. Covers up to 15 m².
Approximate consumption: 1.8 kg/m² per bucket (18 kg) in areas with ceramic tile covering. Covers up to 10 m².

Warranty: Two years from the date of manufacture.

Available Packaging: 16L Bucket (18Kg) / 5.6Kg Gallon.

For additional information regarding this product, please visit:

 <https://www.martinstintas.com.br/produto/martinspren-impermeabilizante-para-lajes-10-em-1/>

SUPPLEMENTARY INFORMATION



MARTINSPREN 10-IN-1 WALL WATERPROOFING



ELEVATED RESISTANCE



WATERPROOF



SIMPLE APPLICATION



THERMAL COMFORT

Cores:
White

Martins PREN Parede is a waterproof and flexible coating designed to safeguard walls and facades from cracks and water infiltration due to rain, while also offering exceptional durability. This multifunctional product seals, waterproofs, and finishes surfaces. It is suitable for application on plaster, concrete, and fiber cement. The product can be tinted using water-based liquid dyes in tinting systems or painted over with acrylic paint. Its elasticity allows it to adapt to surface movements, effectively correcting and preventing the formation of microcracks (openings up to 0.05 mm in accordance with the ABNT NBR 9575 standard).

SURFACE WITH MOLD: To clean the wall, combine equal parts of clean water and bleach, allow the mixture to sit for at least 6 hours, and then rinse the wall thoroughly with ample water. Permit to dry.

SURFACE WITH MOISTURE: Prior to painting, address the absence of waterproofing that is contributing to the issue. Employ waterproofing products designed for moisture and/or seepage concerns.

-GLOSSY SURFACES: Sand until all gloss is eliminated, and remove dust with a damp cloth. Allow to dry. **-Surfaces with acrylic filler:** Wait a minimum of 1 day for the acrylic filler to cure before applying Martins PREN Wall. Sand until the surface is smooth, and remove dust with a damp cloth. Allow to dry.

SURFACES WITH OILS, GREASES, OR FATS: For surfaces contaminated with grease, oils, or fats, thoroughly wash the entire area with soap and water to eliminate all residues. Rinse thoroughly and allow it to dry completely.

Application: Martins PREN Wall is applied similarly to paint. Utilizing a high-pile roller or brush, apply 2 to 3 coats while strictly adhering to the specified consumption per m² and maintaining 4-hour intervals between each coat at a temperature of 25°C. Depending on the wall's type and condition, additional coats may be required. For the initial coat only, Martins PREN Wall may be diluted by a maximum of 20% with clean water to enhance penetration into the substrate. Once waterproofing is completed, allow a minimum of 72 hours for the product to dry, contingent upon the temperature, ventilation, and relative humidity of the environment.

FINISH
White

DILUTION

Before diluting the paint, thoroughly mix the product using a plastic, metal, or wooden spatula, or, ideally, a mechanical mixer. Subsequently, dilute with water as illustrated below.

Dilute with a maximum of 20% clean water for the initial coat.

Dilute to 10% or apply the undiluted product for subsequent layers.

DRYING

Touch dry: 1 hour.

Between coats: four hours.

Final drying duration: 24 hours.

INCOME

Bucket (18 kg) covers an area of up to 180 m² per coat.

A gallon (3.6 kg) covers an area of up to 36 m² per coat.

One liter (0.9 kg) covers an area of up to 9 m² per coat.

(May vary based on the application and surface absorption).

PACKAGING

Liter: 0.900 kg Gallon: 3.6 kg Bucket: 18 kg

For additional information regarding this product, please visit:



<https://www.martinstintas.com.br/produto/martinspren-impermeabilizante-para-paredes-10-em-1/>



ACRYLIC FILLER



SMOOTH SURFACE



EXTREMELY DURABLE



ELEVATED FILLING
CAPACITY



SIMPLE TO APPLY AND SAND

Colors: Ivory

Characteristic: Ideal for leveling and rectifying shallow imperfections on both internal and external surfaces of plaster, gypsum, fine mortar, fiber cement, concrete, concrete block, and walls coated with PVA or acrylic latex, resulting in a smooth finish. This product is easy to apply and sand, dries rapidly, and possesses excellent filling capacity along with strong adhesion.

Surfaces: Newly plastered surfaces should be treated with Martins Acrylic Sealer to standardize absorption, thereby reducing paint usage and enhancing both the appearance and durability of the finish. For "weak" surfaces—such as fragile plaster, whitewash, or sun-faded paint—apply Martins Wall Primer to strengthen them. When it is necessary or desired to level the surface, utilize Martins PVA Putty (for interior applications) or Martins Acrylic Putty (suitable for both interior and exterior use). It is essential that the surface is firm, cohesive, clean, dry, and devoid of dust, grease, oil, soap, or mold prior to any application.

Application: Utilize a steel trowel or spatula. Apply in thin layers until the desired level is attained.

Finish: Matte.

Dilution: Prepared for use.

Coats: One to two coats.

Drying time: Touch dry: 40 minutes / Between coats: 1 hour / Final: 4 hours.

Yield: Plaster, gypsum, fiber cement, concrete blocks, and fine mortar:

From 17 to 20 m², 22 kg.

From 20 to 30 m², 23 kg.

From 23 to 33 m², 27 kg.

Available Packaging: 23 kg drum / 22 kg 14 L can / 22 kg 16 L bucket / 5.6 kg gallon / 900 ml.

For additional information regarding this product, please visit:



<https://www.martinstintas.com.br/produto/massa-acrilica/>



LEVELING COMPOUND



FILLING CAPACITY



EXCELLENT ADHESION



DRIES RAPIDLY



SIMPLE TO IMPLEMENT

Colors: Natural and Colored.

Characteristic: Ideal for leveling and rectifying minor imperfections on interior surfaces of plaster, gypsum, fine mortar, fiber cement, concrete, concrete block, and walls coated with PVA or acrylic latex, resulting in a smooth finish. This product is easy to apply, dries rapidly, and possesses excellent filling capacity along with strong adhesion.

Surfaces: Newly plastered surfaces should be treated with Martins Acrylic Sealer to standardize absorption, thereby minimizing paint usage and enhancing both the aesthetic and durability of the finish. For application on compromised surfaces—such as weak plaster, whitewash, or sun-faded paint—utilize Martins Wall Primer to strengthen them. When it is necessary or desired to achieve a level surface, employ Martins Leveling Compound. It is essential that the surface is firm, cohesive, clean, dry, and devoid of dust, grease, oil, soap, or mold prior to application.

Application: For application to the wall: Steel trowel or spatula.
For the effect: Plastic trowel, spatulas, or effect roller.

Finish: Matte.

Dilution: Ready for use; if the professional desires, dilute up to 3% with potable water.

Coats: one coat.

Drying time: Touch dry: 4 hours / Final: 16 hours / Full cure: 4 days.

Yield: Plaster, gypsum, fiber cement, concrete blocks, and fine mortar: 10 to 15 m² per 23 kg.

Available Packaging: 23 kg drum / 22 kg 14 L can / 22 kg 14 L bucket / 5.6 kg gallon / 900 ml.

For additional information regarding this product, please visit:



<https://www.martinstintas.com.br/produto/niveladora/>



PVA ADHESIVE



FILLING CAPACITY



IMPECCABLE WALL



EXTREMELY SOFT



EXTENDED PROCESSING TIME

Colors: Ivory

Characteristic: Ideal for leveling and rectifying minor imperfections on interior surfaces of plaster, gypsum, fine mortar, fiber cement, concrete, concrete block, and walls coated with PVA or acrylic latex, resulting in a smooth finish. This product is easy to apply and sand, dries rapidly, and exhibits excellent filling capacity along with strong adhesion.

Surfaces: Newly plastered surfaces should be treated with Martins Acrylic Sealer to standardize absorption, thereby reducing paint usage and enhancing both the appearance and durability of the finish. For "weak" surfaces—such as fragile plaster, whitewash, or sun-faded paint—apply Martins Wall Primer to strengthen them. When it is necessary or desired to level the surface, utilize Martins PVA Putty (for interior applications) or Martins Acrylic Putty (suitable for both interior and exterior use). It is essential that the surface is firm, cohesive, clean, dry, and devoid of dust, grease, oil, soap, or mold prior to any application.

Application: Utilize a steel trowel or spatula. Apply in thin layers until the desired level is attained.

Finish: Matte.

Dilution: Prepared for use.

If using an airless sprayer, dilute with clean water up to 20%.

Utilizing an airless sprayer, select a nozzle with an orifice size ranging from 0.023" to 0.027", maintain a pressure between 2500 and 2900 PSI, and achieve an application speed of 7 to 9 m² per minute.

Coats: Two to three coats.

Drying time: Touch dry: 40 minutes / Between coats: 1 hour / Final: 3 hours.

Performance:

Sealed surfaces, plaster, and drywall: 30 m² to 40 m² per coat/23 kg barrel.

Available Packaging: 23 kg Barrel / 14 L Can / 22 kg Bucket / 16 L Gallon / 5.6 kg Gallon / 900 ml

For additional information regarding this product, please visit:



<https://www.martinstintas.com.br/produto/massa-pva/>



MICRO-COVERING



EXTERIOR AND
INTERIOR



EXTENSIVE COVERAGE



ELEVATED
RESISTANCE



WATER REPELLENCE

Colors: White and Multicolor (according to customer specifications).

Feature: Micro-coating is a matte finish paint that offers exceptional resistance, water repellency, and coverage, enabling you to maintain your home's appearance for an extended period. This high-quality paint is ideal for both exterior and interior applications on textured finishes, rustic textures, granfinno texture, and lamato. Its micro-particle composition facilitates painting without compromising the inherent roughness of the textured finish.

Surfaces: Walls featuring textured coatings, regardless of whether they are new, faded, or stained. It is essential that the surface is firm, cohesive, clean, dry, and devoid of dust, grease, oil, soap, or mold prior to any application.

Application

Brush, wool roller, paintbrush, and spray gun.

NOTE: SHAKE WELL BEFORE AND DURING USE.

Finish: Matte.

Dilution: Dilute 10% to 20% with purified water.

Coats: one coat.

Drying time: Touch dry: 1 hour / Complete drying: 72 hours.

Yield: 18L covers an area of up to 80 m² per coat.
16L for 60 to 70 square meters.

Warranty: Two years from the date of manufacture.

Available Packaging: 16L Barrel / 18L Can / 3.6L Gallon

For additional information regarding this product, please visit:



<https://www.martinstintas.com.br/produto/micro-revestimento/>



ACRYLIC WATERPROOFING RESIN FOR ROOFING TILES.



LUSTROUS FINISH



WATERPROOFING



SAFEGUARDING AND
RESILIENCE



SIMPLE TO IMPLEMENT

Colors: Line

Feature: Acrylic Waterproofing Resin is a high-gloss finish product that offers protection and durability, along with exceptional waterproofing capabilities. Being water-based, it features low odor and facilitates easy application. Ideal for safeguarding and enhancing both interior and exterior spaces, it is applicable on surfaces such as tiles (ceramic, asbestos, and others), exposed bricks, natural stones (slate, Minas Gerais stone, and others), exposed concrete, fiber cement, and textured or painted walls with PVA and acrylic paints.

Surfaces:

In accordance with the ABNT NBR 13245 standard, the surface must be solid, cohesive, clean, dry, and devoid of dust, shine, grease, oil, soap, mold, or loose particles.

Application: Brush, wool roller, paintbrush, and spray gun.

Finish: Lustrous.

Dilution: Brush and wool roller: 10% with clean water for all applications.

Spray gun: 20% diluted with clean water in all applications.

Coats: Two to three coats.

Drying time: Touch dry: 1 hour / Between coats: 4 hours / Final: 24 hours.

Yield: 3.6L covers an area of 40 m² per coat.

18L covers an area of up to 200m² per coat.

Warranty: Two years from the date of manufacture.

Available Packaging: 18L Can / 3.6L Gallon / 900 mL

For additional information regarding this product, please visit:



<https://www.martinstintas.com.br/produto/resina-para-telha/>

SUPPLEMENTARY INFORMATION



ACRYLIC COATING



ENHANCED PAINT
ADHESION



FACILITATES THE
APPLICATION OF
FILLERS.



ENCOURAGES INK
CONSERVATION.



SEALS AND UNIFIES THE PLASTERWORK

Colors: White and Multicolor (according to customer specifications).

Feature: It serves as an acrylic enhancement for both interior and exterior plaster walls. Recommended for To seal and equalize the absorption of new interior surfaces such as plaster, concrete blocks, exposed concrete, fiber cement, and fine mortar, this product serves as a first coat on unsealed surfaces. Its ease of application, combined with its high filling capacity, diminishes the substrate's porosity, thereby enhancing the efficiency of the finishing product.

Surfaces: Newly plastered surfaces should be treated with Martins Acrylic Sealer to ensure To optimize absorption, minimize paint consumption, and enhance the appearance and durability of the finish, apply Martins Wall Primer on "weak" surfaces such as fragile plaster, whitewash, or sun-damaged paint to reinforce them. Ensure that the surface is solid, cohesive, clean, dry, and devoid of dust, grease, oil, soap, or mold prior to application.

Application: Wool roller, brush, or paintbrush.

Finish: Matte.

Dilution: Up to 20% with drinking water.

Coats: one coat.


Drying time: Touch dry: 60 minutes / Between coats: 2 hours / Final: 4 hours.

Coverage: An 18L bucket covers up to 120 m² per coat. A 16L drum covers 80 to 100 m² per coat. 14L can, covering 70 to 90 m² per coat.

Warranty: Two years from the date of manufacture.

Available Packaging: 16L Barrel / 14L Can / 18L Bucket / 3.6L Gallon / 900 mL.

For additional information regarding this product, please visit:

 <https://www.martinstintas.com.br/produto/selador/>



CHALK PAINT AND CHALK PLUS



INTERIORS



ELEVATED ADHESION
STRENGTH



SIMPLE TO IMPLEMENT



MATTE AND CONSISTENT FINISH

Colors: Ivory

Feature: It is appropriate for interior use directly on plaster and plasterboard.

Appropriate for standard or drywall surfaces, this product can serve as a primer, facilitating the application of PVA or acrylic latex paint. Its formulation incorporates technology that enhances its suitability for diverse plaster types, ensuring high adhesion. This matte, uniform finish paint functions as a fixative for loose particles.

Surfaces: Newly plastered surfaces should be treated with Martins Acrylic Sealer to ensure

To ensure uniform absorption, minimize paint consumption, and enhance the appearance and durability of the finish, apply Martins Wall Primer on "weak" surfaces such as fragile plaster, whitewash, or sun-damaged paint to reinforce them. When it is necessary or desired to achieve a level surface, utilize Martins PVA Putty (for interior use) or Martins Acrylic Putty (for both interior and exterior use). It is essential that the surface is firm, cohesive, clean, dry, and devoid of dust, grease, oil, soap, or mold prior to any application.

Application: Roller brush made of wool or microfiber.

Finish: Matte.

Dilution: For Plaster/Putty Primer: 30% to 50%.

Plaster, Concrete: 10% to 20% with purified water.

Coats: Two to three coats.

Drying time: Touch dry: 2 hours / Between coats: 4 hours / Final: 12 hours.

Yield: Primer for Plaster/Putty: 100 m² to 125 m²/18L.

Reboco, Concrete: 120 m² to 150 m²/18L.

Available Packaging: 18-liter Can / 3.6-liter Gallon / 900 milliliters.

For additional information regarding this product, please visit:



<https://www.martinstintas.com.br/produto/gero-e-gero-plus/>



ACRYLIC WATERPROOFING SEALANT



EXTERIOR AND
INTERIOR



SIMPLE TO IMPLEMENT



WATER-BASED



ENHANCE THE AUTHENTIC APPEARANCE

Colors: White Liquid / Coating
arid transparent

Feature: Acrylic varnish is a water-based wall coating that offers protection, luster, and improves the aesthetic appeal of the surface.

Natural appearance, appropriate for application on both interior and exterior surfaces of brick, exposed concrete, fiber cement, and walls coated with PVA and acrylic paints, as well as over textured surfaces.

Surfaces: Newly plastered surfaces should be treated with Martins Acrylic Sealer to...

To optimize absorption, minimize paint consumption, and enhance the appearance and durability of the finish, apply Martins Wall Primer on "weak" surfaces such as fragile plaster, whitewash, or sun-damaged paint to reinforce them. When it is necessary to level surfaces, utilize Martins PVA Putty (for interior use) or Martins Acrylic Putty (for both interior and exterior use). It is essential that the surface is firm, cohesive, clean, dry, and devoid of dust, grease, oil, soap, or mold prior to any application.

Application: Brush, wool roller, paintbrush, and spray gun.

Finish: Lustrous.

Dilution: Brush and wool roller: 10% with clean water for all applications.

Spray gun: 20% diluted with clean water for all applications.

Coats: Two to three coats.

Drying time: Touch dry: 2 hours

Between coats: six hours. Final: twenty-four hours.

Yield: 3.6 liters covers an area of up to 50 m² per coat.

18 liters covers up to 200 m² per coat.

Warranty: One year from the date of manufacture.

Available Packaging: 3.6 liters and 18 liters.

For additional information regarding this product, please visit:



<https://www.martinstintas.com.br/produto/verniz-acrilico/>

2. ACRYLIC PAINTS



ACRYLIC REFINEMENT LIQUID RUBBER



SUPERB FINISH



PROVIDES PROTECTION FROM RAIN.



RESILIENT AND ADAPTABLE



WATERPROOF

Colors: White and Multicolor (according to customer specifications).

Feature: Martins Rubberized Latex is an elastic ink that inhibits the reemergence of

This paint effectively seals fine cracks (up to 0.3 mm), preventing water infiltration from rain, sea spray, dew, or washing on exterior walls. Its satin finish and substantial thickness provide exceptional protection against mold and algae growth, as well as the damaging effects of sunlight and other environmental conditions. It is particularly well-suited for exterior applications on plaster and acrylic filler surfaces.

Surfaces: For newly plastered surfaces, permit a full curing period of 28 days prior to the application of Martins Acrylic Sealer, diluted up to 20% with clean water. For application on compromised surfaces—such as weak plaster, whitewash, or sun-faded paint—utilize Martins Wall Primer diluted 50% to 100% with clean water to reinforce the surface.

Whenever it is desired or necessary to achieve a level surface, utilize Martins Acrylic Putty (exterior / interior). It is essential that the surface is firm, cohesive, clean, dry, and devoid of dust, grease, oil, soap, or mold prior to any application.

Application: Brush, wool roller, paintbrush, and spray gun.

Matte finish.

Dilution: Up to 20% with clean water for the initial coat. Up to 10% with clean water for subsequent coats.

Coats: three coats.

Drying time: Touch dry: 2 hours. Between coats: 4 hours. Final: 12 hours.

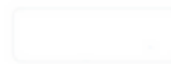
Income:

A 3.6-liter gallon produces up to 15 m² of finished product.

An 18-liter can covers an area of up to 75m² when applied.

Warranty: Two years from the date of manufacture.

Available Packaging: 18-liter Can / 3.6-liter Gallon / 900 milliliters.



SUPER BRANCO



CROMIO



PRATA



ELEFANTE



NANQUIM



PRETO

For additional information regarding this product, please visit:



<https://www.martinstintas.com.br/produto/requite-borracha-liquida/>

2. ACRYLIC PAINTS

STANDARD PERFORMANCE ACRYLIC



HIGHLY CONCENTRATED



ODORLESS



HIGH-PERFORMANCE



EXTENSIVE COVERAGE



Colors: White and Multicolor (according to customer specifications).

Characteristic: Standard Acrylic Latex is a matte paint that is easy to apply, provides excellent coverage and quick drying, has a low odor, and delivers a remarkably fine, velvety matte finish, enhancing environments with refinement and sophistication. It is suitable for both interior and exterior applications on plaster, acrylic fillers, textures, concrete, fiber cement, and interior surfaces with adequately prepared fillers.

Surfaces: Newly plastered surfaces should be treated with Martins Acrylic Sealer to standardize absorption, thereby reducing paint usage and enhancing both the appearance and durability of the finish. For "weak" surfaces—such as fragile plaster, whitewash, or sun-faded paint—apply Martins Wall Primer to strengthen them. When it is necessary or desired to level the surface, utilize Martins PVA Putty (for interior applications) or Martins Acrylic Putty (suitable for both interior and exterior use). It is essential that the surface is firm, cohesive, clean, dry, and devoid of dust, grease, oil, soap, or mold prior to any application.

Application: Brush, wool roller, paintbrush, and spray gun.

Finish: Matte.

Dilution: It may be diluted between 50% and 80% with potable water.

Coats: Two to three coats.

Drying:

Touch dry: 30 minutes. Between coats: 4 hours. Final drying: 12 hours.

FINISHED YIELD:

An 18-liter can covers up to 170 m² of finished area.

A 3.6-liter gallon covers up to 33 m² of finished area.

A 3.2-liter gallon can cover an area of up to 30 m² of finished material.

(May vary based on the dilution employed, the nature and condition of the surface to be painted, and the color selected).

Warranty: Two years from the date of manufacture.

Available Packaging: 18-liter Can / 3.6-liter Gallon / 900 milliliters.



For additional information regarding this product, please visit:



<https://www.martintintas.com.br/produto/acrilico-standard-performance/>

2. ACRYLIC PAINTS

ACRYLIC LATEX SURFACES AND FACADES



ELEVATED DURABILITY



MINIMAL ODOR



HIGH-PERFORMANCE



EXTERIOR AND
INTERIOR



Colors: Vibrant Line

Martins Floors and Facades is designed for the painting and repainting of cement surfaces in parking lots, garages, sports courts, balconies, sidewalks, and other areas featuring rustic concrete and matte, porous ceramic flooring, as well as both exterior and interior walls and facades. These surfaces are consistently safeguarded against sun exposure, rain, sea air, and wear from foot traffic. Additionally, it provides excellent coverage, outstanding yield, and straightforward application. Martins Floors and Facades utilizes advanced resins in its formulation, enhancing its durability and facilitating greater spreadability. Collectively, these attributes render the product an exceptional and cost-effective choice for enhancing and renovating floors and facades.

Application

Roller brush constructed from wool or microfiber.

DILUTION

Before diluting the paint, thoroughly mix the product using a plastic, metal, or wooden spatula. A whisk may also be employed. Subsequently, dilute with water as illustrated below.

IF USING a wool roller, brush, or paintbrush!

First coat: dilute 30% with purified water.

For the second coat, dilute with 20% clean water if utilizing an airless spray gun!

Dilute 30% to 40% with purified water.

LAYERS

Typically, two or three coats will yield excellent results. However, depending on the type and condition of the wall, as well as the color, additional coats may be necessary.

DRYING

Touch dry: 1 hour post-application.

Between coats: four hours after application.

Final drying duration: 12 hours.

Movement of individuals: 48 hours. Movement of vehicles: 72 hours.

Income

COLORS – An 18-liter can produces coverage for up to 120 m² of finished product.

WHITE – An 18-liter can covers an area of up to 70 m² when applied.

COLORS – A 3.6-liter gallon provides coverage for up to 24 m² upon completion.

WHITE – A 3.6-liter gallon covers an area of up to 14 m² of finished material.

Product Guarantee

Product comes with a warranty of up to two years from the date of manufacture. The warranty is contingent upon appropriate surface preparation prior to product application, along with correct application procedures. Additionally, the warranty necessitates maintenance every two years, which involves the application of new paint.

It is important to note that all paints and coatings necessitate maintenance as they deteriorate over time due to exposure to the elements.

(Note: In vibrant colors, fading may occur more rapidly, contingent upon the weathering the surface experiences. It is important to note that in regions with high traffic or frequent moisture exposure, wear is significantly increased, necessitating maintenance prior to two years.)

Packaging

3.6 liters, 18 liters.



For additional information regarding this product, please visit:



<https://www.martintintas.com.br/produto/acrilico-pisos-e-fachadas/>

2. ACRYLIC PAINTS

ACRYLIC LATEX INNOVATIVE FLOOR PAINT



EXCELLENT
DURABILITY



MINIMAL ODOR



EXCELLENT
PERFORMANCE



EXTERIOR AND
INTERIOR



Product: Inove Floor Coating (all colors)

Floor paint serves as a coating for both exterior and interior surfaces. It is ideal for application on cement floors as well as matte and porous ceramic tiles, suitable for various environments including leisure areas, staircases, balconies, sports courts, and other concrete surfaces, whether rough or smooth, or for the purpose of repainting. This product is easy to apply and dries rapidly, providing excellent coverage and adhesion, effective spreading, strong resistance to marine air, and a satin finish. These attributes render it an excellent and cost-effective solution for renovating, enhancing, and safeguarding floors.

Surfaces

Surfaces composed of rough or smooth concrete, as well as porous, matte ceramic tiles, must be clean and dry, devoid of any contaminants such as oils, grease, dust, and moisture. For polished cement, clean with a solution of 1 liter of muriatic acid mixed with 2 liters of water, allowing it to sit for 30 minutes before rinsing thoroughly and permitting it to dry. If the surface is contaminated with oils and grease, wash with soap and water, rinse thoroughly, and allow it to dry. Prior to repainting, remove any loose material, wash to eliminate all dust, and apply Inove Floor Paint.

Application

Roller brush constructed from wool or microfiber.

Finish

Matte

Dilution

New and burnt cement: 10% with purified water in all layers.

New, weak, or unburned cement: 30% clean water for the initial coat and 10% for the following coats.

Coats

2 to 3 layers.

Drying

Touch dry: 2 hours. Between coats: 4 hours.

Income

COLORS – A 16-liter bucket produces coverage for up to 106 m² of finished material.

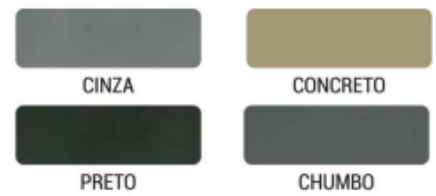
WHITE – A 16-liter bucket can cover an area of up to 62 m² of finished material.

COLORS – A 3.6-liter gallon provides coverage for up to 24 m² upon completion.

WHITE – A 3.6-liter gallon covers an area of up to 14 m² of finished material.

Warranty: Two years from the date of manufacture.

Available Packaging: 16L Bucket / 3.6L Gallon



For additional information regarding this product, please visit:

<https://www.martinstintas.com.br/produto/inove-tinta-para-piso/>

2. ACRYLIC PAINTS

PROFESSIONAL LATEX



INTERIOR SURFACES



MINIMAL ODOR



EXTENSIVE COVERAGE



HIGH-PERFORMANCE



Colors: White and Vibrant (Light Line Hues)

Feature: Economical Professional Latex is an interior paint designed for those seeking affordability without compromising quality. Featuring a matte finish, it offers easy application, exceptional coverage, rapid drying, low odor, and good yield, resulting in a remarkably smooth velvety texture that enhances refinement and sophistication in interior spaces.

Surfaces: Newly plastered surfaces should be treated with Martins Acrylic Sealer to ensure

To ensure uniform absorption, minimize paint consumption, and enhance the appearance and durability of the finish, apply Martins Wall Primer on "weak" surfaces such as fragile plaster, whitewash, or sun-damaged paint to reinforce them. When it is necessary or desired to achieve a level surface, utilize Martins PVA Putty (for interior use) or Martins Acrylic Putty (for both interior and exterior use). It is essential that the surface is firm, cohesive, clean, dry, and devoid of dust, grease, oil, soap, or mold prior to any application.

Application: Brush, wool roller, paintbrush, and spray gun.

Finish: Matte.

Dilution: Up to 20% with clean water for all surfaces.

Coats: Two to three coats.

Drying time: Touch dry: 2 hours / Between coats: 3 hours / Final: 12 hours.

Yield: 3.6L covers an area of 45 to 55 m² per coat.

18L covers an area of up to 225m² per coat.

900ml covers an area of up to 10m² per coat.

Warranty: Two years from the date of manufacture.

Available Packaging: 18-liter Bucket / 3.6-liter Gallon / 900 milliliters.



For additional information regarding this product, please visit:



<https://www.martinstintas.com.br/produto/latex-profissional/>

2. ACRYLIC PAINTS

ACRYLIC LATEX



INTERIOR SURFACES



MINIMAL ODOR



EXTENSIVE COVERAGE



HIGH-PERFORMANCE



Colors: White and Vibrant (Light Line Hues)

Characteristic: Acrylic latex is a user-friendly paint that offers exceptional coverage and yield, dries rapidly, and has a low odor. It delivers a remarkably fine velvety matte finish, adding refinement and sophistication to various environments. This paint is ideal for application on interior surfaces, including plaster, acrylic filler, PVA filler, fiber cement, concrete, textures, and gypsum.

Surfaces: Newly plastered surfaces should be treated with Martins Acrylic Sealer to ensure

To ensure uniform absorption, minimize paint consumption, and enhance the appearance and durability of the finish, apply Martins Wall Primer on "weak" surfaces such as fragile plaster, whitewash, or sun-damaged paint to reinforce them. When it is necessary or desired to achieve a level surface, utilize Martins PVA Putty (for interior use) or Martins Acrylic Putty (for both interior and exterior use). It is essential that the surface is firm, cohesive, clean, dry, and devoid of dust, grease, oil, soap, or mold prior to any application.

Application: Brush, wool roller, paintbrush, and spray gun.

Finish: Matte.

Dilution: 20% to 30% with clean water for all applications.

Coats: Two to three coats.

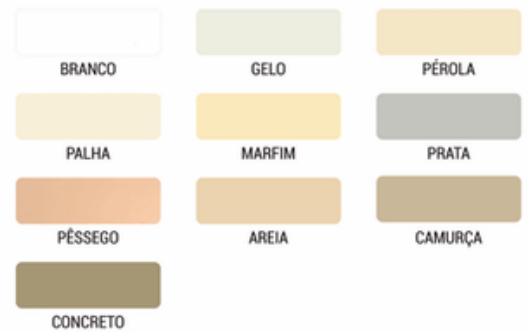
Drying time: Touch dry: 1 hour / Between coats: 4 hours / Final: 12 hours.

Income:

Liter (900 ml) covers 8 to 15 m²; Gallon (3.6 l) covers 40 to 60 m²; Can (18 l) covers 200 to 300 m².

Warranty: Two years from the date of manufacture.

Available Packaging: 18-liter Bucket / 3.6-liter Gallon / 900 milliliters.



For additional information regarding this product, please visit:



<https://www.martinstintas.com.br/produto/latex-acrilico/>

2. ACRYLIC PAINTS

HIGHLY ECONOMICAL LATEX



INTERIOR SURFACES



MINIMAL ODOR



EXTENSIVE COVERAGE



HIGH-PERFORMANCE



Colors: White and Vibrant (Light Line Hues)

Characteristic: Acrylic latex is a user-friendly paint that offers exceptional coverage and yield, dries rapidly, and has a low odor. It delivers a remarkably fine velvety matte finish, adding refinement and sophistication to various environments. This paint is ideal for application on interior surfaces, including plaster, acrylic filler, PVA filler, fiber cement, concrete, textures, and gypsum.

Surfaces: Newly plastered surfaces should be treated with Martins Acrylic Sealer to ensure

To ensure uniform absorption, minimize paint consumption, and enhance the appearance and durability of the finish, apply Martins Wall Primer on "weak" surfaces such as fragile plaster, whitewash, or sun-damaged paint to reinforce them. When it is necessary or desired to achieve a level surface, utilize Martins PVA Putty (for interior use) or Martins Acrylic Putty (for both interior and exterior use). It is essential that the surface is firm, cohesive, clean, dry, and devoid of dust, grease, oil, soap, or mold prior to any application.

Application: Brush, wool roller, paintbrush, and spray gun.

Finish: Matte.

Dilution: Up to 20% with clean water for all surfaces.

Coats: Two to three coats.

Drying time: Touch dry: 2 hours / Between coats: 3 hours / Final: 12 hours.

Income:

0.900 ml covers an area of up to 6m² per application.

3.6 liters covers an area of up to 22m² per coat.

16 liters covers an area of up to 100m² per coat.

18 liters covers up to 112m² per coat.

Warranty: Two years from the date of manufacture.

Available Packaging: 18-liter Bucket / 3.6-liter Gallon / 900 milliliters.



For additional information regarding this product, please visit:



<https://www.martinstintas.com.br/produto/latex-super-economico/>

2. ACRYLIC PAINTS



SOVEREIGN PREMIUM ACRYLIC



SUPERB FINISH



MINIMAL ODOR



EXTENSIVE COVERAGE



ELEVATED DURABILITY

Colors: White and Multicolor (according to customer specifications).

Feature: Premium Acrylic Latex is a matte paint that offers effortless application, exceptional coverage, and...

Quick-drying, low-odor, and offering an exceptionally fine, velvety matte finish, this product enhances environments with refinement and sophistication. It is suitable for both interior and exterior applications on plaster, acrylic fillers, textures, concrete, fiber cement, and interior surfaces that have been properly prepared with fillers.

Surfaces: Newly plastered surfaces should be treated with Martins Acrylic Sealer to standardize absorption, thereby reducing paint usage and enhancing both the appearance and durability of the finish. For "weak" surfaces—such as fragile plaster, whitewash, or sun-faded paint—apply Martins Wall Primer to strengthen them. When it is necessary or desired to level the surface, utilize Martins PVA Putty (for interior applications) or Martins Acrylic Putty (suitable for both interior and exterior use). It is essential that the surface is firm, cohesive, clean, dry, and devoid of dust, grease, oil, soap, or mold prior to any application.

Application: Brush, wool roller, paintbrush, and spray gun.

Finish: Matte.

Dilution: Dilute with clean water at a ratio of 10 to 20%.

Coats: Two to three coats.

Drying time: Touch dry: 1 hour / Between coats: 4 hours / Final: 12 hours.

FINISHED YIELD:

An 18-liter can covers up to 130 m² of finished area.

A 16-liter can covers an area of up to 116 m² when fully applied.

A 3.6-liter gallon produces coverage for up to 26 m² of finished material.

A 3.2-liter gallon can cover an area of up to 23 m² of finished material.

(May vary based on the dilution employed, the nature and condition of the surface to be painted, and the color selected).

Warranty: Two years from the date of manufacture.

Available Packaging: 18L Can / 3.6L Gallon



For additional information regarding this product, please visit:



<https://www.martinstintas.com.br/produto/acrilico-soberano-premium/>

2. ACRYLIC PAINTS



SOVEREIGN PREMIUM SEMI-GLAZE ACRYLIC



SUPERB FINISH



MINIMAL ODOR



EXTENSIVE COVERAGE



ELEVATED DURABILITY

Colors: White and Multicolor

Feature: Product: Semi-Gloss Latex (all hues)

This paint is simple to apply, delivers outstanding coverage and yield, dries rapidly, emits a low odor, and offers a very fine, non-glossy finish, enhancing the refinement and sophistication of both environments and handcrafted pieces. It is suitable for painting both exterior and interior surfaces, including plaster, acrylic filler, PVA filler, fiber cement, concrete, wood, MDF, textured surfaces, and gypsum.

Surfaces: Newly plastered surfaces should be treated with Martins Acrylic Sealer, while wood and MDF surfaces require an application of MDF Paint to ensure uniform absorption, thereby reducing paint consumption and enhancing the appearance and durability of the finish. For "weak" surfaces (such as fragile plaster, whitewash, or sun-damaged paint), apply Martins Wall Primer to strengthen them. When leveling the surface is desired or necessary, utilize Martins PVA Putty (for interior use) or Martins Acrylic Putty (suitable for both interior and exterior applications). It is essential that the surface is firm, cohesive, clean, dry, and free of dust.

Eliminate any grease, oil, soap, or mold prior to application.

Application: Brush, wool roller, paintbrush, and spray gun.

Finish: Semi-gloss.

Dilution: Dilute with clean water at a ratio of 10 to 20%.

Coats: Two to three coats.

Drying time: Touch dry: 1 hour / Between coats: 4 hours / Final: 12 hours

Performance:

An 18-liter can covers an area of up to 90 m² when applied.

A 16-liter can produces coverage for up to 80 m² of finished product.

A 3.6-liter gallon produces coverage for up to 18 m² of finished material.

A 3.2-liter gallon can cover an area of up to 16 m² of finished material.

Warranty: Two years from the date of manufacture.

Available Packaging: 18-Liter Can / 3.6-Liter Gallon



For additional information regarding this product, please visit:



<https://www.martinstintas.com.br/produto/produto-acrilico-soberano-premium-semi-brilho/>

3. TEXTURES



BURNED CEMENT



EXTERIORS AND
INTERIORS



EXTREMELY DURABLE



SIMPLE TO
IMPLEMENT



MATTE FINISH

Colors: According to the customer's specifications.

Characteristic: This is a smooth coating that enables the realistic effect of polished cement, featuring easy application, high coverage, and outstanding performance, thereby enhancing the sophistication and refinement of any environment. It is suitable for both exterior and interior applications. Available in two pre-mixed colors, it can also be tinted to any shade using tintometric systems.

Surfaces: Newly plastered surfaces should be treated with Martins Acrylic Sealer or Martins White Acrylic Latex as a primer in the Burnished Cement Effect color to enhance adhesion, normalize absorption, and improve the overall performance of the effect. For application on compromised surfaces (such as weak plaster, whitewash, or sun-damaged paint), it is advisable to first apply Martins Wall Primer to strengthen the substrate, followed by a coat of Martins Acrylic Latex in the Burnished Cement Effect color. When leveling the surface is necessary, utilize Martins PVA Putty (for interior use) or Martins Acrylic Putty (suitable for both exterior and interior applications). It is essential that the surface is firm, cohesive, clean, dry, and devoid of dust, grease, oil, soap, or mold prior to any application.

Application: Stainless steel trowel featuring rounded corners and a stainless steel spatula.

Finish: Matte.

Dilution: Prepared for use.

Coats: Three coats will yield an excellent effect; apply a fourth coat if necessary.

Drying time: Touch dry: 1 hour. / Between coats: 2 hours. / Final: 24 hours. / Full cure: 30 days.

Yield: Plaster, gypsum, fiber cement, concrete blocks, and fine mortar:
25 to 35 m² per 25 kg per coat (layer)
6.5 to 9 m² 5.6 kg/coat (layer)

Warranty: 3 years for the product and 1 year for color (fading). We also offer this product with a 5-year warranty; the price varies and necessitates a separate quote.

Available Packaging: 23 kg Barrel / 22 kg Can / 23 kg Bucket / 5.6 kg Gallon / 1.4 kg Gallon



For additional information regarding this product, please visit:

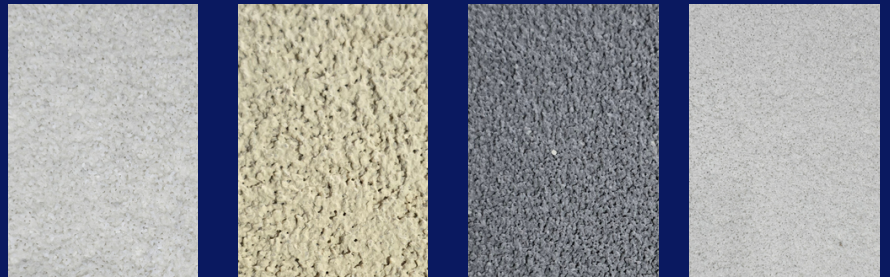


<https://www.martinstintas.com.br/produto/cimento-queimado/>

3. TEXTURES



BROMATE AND NOBLE BROMATE TEXTURE WITH GLOSS #16 20 25 30



Colors: Natural and Customized (according to customer specifications).

Characteristic: Textures that produce rustic effects with subtle points of shine. Ideal for texturing exterior surfaces and For interior plastering, acrylic filler, and repainting over PVA or acrylic latex paint, its water-repellent properties enhance the durability of the coating by preventing moisture infiltration. The formulation comprises components that impart a sophisticated and contemporary finish to the wall, improving texture and water resistance, thereby eliminating the necessity for a finishing paint. It offers ease of application, strong adhesion, and exceptional uniformity.

Surfaces: Newly plastered surfaces should be treated with Martins Acrylic Sealer to standardize absorption, thereby reducing paint usage and enhancing both the appearance and durability of the finish. For "weak" surfaces—such as fragile plaster, whitewash, or sun-faded paint—apply Martins Wall Primer to strengthen them. When it is necessary or desired to level the surface, utilize Martins PVA Putty (for interior applications) or Martins Acrylic Putty (suitable for both interior and exterior use). It is essential that the surface is firm, cohesive, clean, dry, and devoid of dust, grease, oil, soap, or mold prior to any application.

Application: For wall loading: Steel trowel and/or spatula.

For this purpose, utilize a plastic trowel and/or spatulas.

To clean: A bucket filled with clean water and a soft-bristled brush.

Washing Instructions: After four days, utilize a high-pressure washer, adjusting the spray pattern while maintaining a distance of 50 to 60 centimeters from the wall to prevent damage to the coating. Allow it to dry, and the shine will emerge.

Finish: Matte.

Dilution: Ready for use; however, if the professional chooses to dilute it, a maximum of 3% with potable water is permissible.

Coats: 1 coat. Note: For highly uneven surfaces, 2 coats are required to address the issue.

NOTE: If the wall exhibits unevenness, we recommend applying two coats.

Drying time: Touch dry: 6 hours / Final drying: 16 hours / Wash to enhance luster: 4 days.

Yield: Appropriate for plaster, gypsum, fiber cement, concrete blocks, and fine mortar, as well as for repainting and sealed surfaces.

Bromate Texture #16: can cover an area of 5 to 6 m² per 23 kg.

Bromate Texture #20: can cover an area of 5 to 7 m² per 23 kg.

Bromate Texture #25: capable of covering an area of 6 to 8 m² per 23 kg.

Bromate Texture #30: can cover an area of 6 to 8 m² per 23 kg.

Warranty: 3 years for the product and 1 year for color (fading). We also offer this product with a 5-year warranty, with a variable price. Separate quotation.

Available Packaging: 23 kg Barrel / 14 L Can / 23 kg Bucket / 16 L Gallon / 5.6 kg Gallon / 900 ml

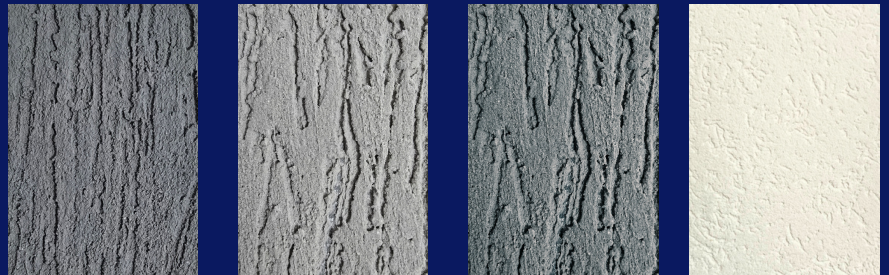
For additional information regarding this product, please visit:

<https://www.martinstintas.com.br/produto/textura-bromato-e-bromato-nobre-com-brilho-20-25-30/>

3. TEXTURES



TEXTURA GRAFIMARTINS, GRAFIMARTINS SHINE AND GRAFIMARTINS SHINE PLUS #10 12 14 20



Colors: Natural and Customized (according to customer specifications).

Characteristic: A texture featuring larger grains that produce rustic effects of grooves (scratches) and distinctive designs. Ideal for texturing both internal and external surfaces of plaster, concrete blocks, exposed concrete, acrylic or putty, fiber cement, and for repainting over PVA or acrylic. Its water-repellent property enhances the paint's durability by preventing moisture penetration. The formulation includes components that impart a unique scratched finish to the wall, enhancing both texture and water repellency, thereby eliminating the necessity for a finishing paint. It offers ease of application, strong adhesion, and excellent homogeneity. The distinction of Grafiato Shine and Grafiato Shine Plus from Grafiato lies in the incorporation of mica particles that provide a shimmering effect.

Surfaces: Newly plastered surfaces should be treated with Martins Acrylic Sealer to standardize absorption, thereby reducing paint usage and enhancing both the appearance and durability of the finish. For "weak" surfaces—such as fragile plaster, whitewash, or sun-faded paint—apply Martins Wall Primer to strengthen them. When it is necessary or desired to level the surface, utilize Martins PVA Putty (for interior applications) or Martins Acrylic Putty (suitable for both interior and exterior use). It is essential that the surface is firm, cohesive, clean, dry, and devoid of dust, grease, oil, soap, or mold prior to any application.

Application: For application to the wall: Steel trowel or spatula.
For scoring: Utilize a plastic or wooden trowel.

Finish: Matte.

Dilution: Ready for use; if the professional chooses to dilute, a maximum of 3% with potable water is permitted.

Coats: one coat.

Drying time: Touch dry: 4 hours / Final drying: 16 hours / Complete cure: 4 days.

Yield: Appropriate for plaster, gypsum, fiber cement, concrete blocks, and fine mortar, as well as for repainting and sealed surfaces.

Textura Grafimartins #10: pode render de 4 a 6 m² com 23 kg.

Textura Grafimartins #12: pode render de 5 a 7 m² com 23 kg.

Textura Grafimartins #14: pode render de 5 a 7 m², 23 kg.


Textura Grafimartins #20: pode render de 6 a 8 m² com 23 kg.

Warranty: 3 years for the product and 1 year for color (fading). Additionally, we offer this product with a 5-year warranty, price [price missing].

Distinct with individual quotation.

Available Packaging: 23 kg Barrel / 14 L Can / 23 kg Bucket / 16 L Gallon / 5.6 kg / 900 ml.

For additional information regarding this product, please visit:

 <https://www.martinstintas.com.br/produto/textura-grafiato-grafiato-shine-e-grafiato-shine-plus-10-12-1/>

3. TEXTURES



GRANFINO AND GRANFINO ULTRA TEXTURE #16, #20, #25, #30



Colors: Natural and Customized (according to customer specifications).

Characteristic: Textures that produce rustic effects and unique designs. Ideal for texturing both interior and exterior surfaces of plaster, concrete blocks, exposed concrete, acrylic or putty, fiber cement, and for repainting over PVA or acrylic. Its water-repellent properties enhance the paint's durability by preventing moisture penetration. The formulation incorporates components that impart a distinctive scratched finish to the wall, improving texture and water repellency, thereby eliminating the necessity for a finishing paint. It offers ease of application, strong adhesion, and excellent uniformity.

Surfaces: Newly plastered surfaces should be treated with Martins Acrylic Sealer to standardize absorption, thereby reducing paint usage and enhancing both the appearance and durability of the finish. For "weak" surfaces—such as fragile plaster, whitewash, or sun-faded paint—apply Martins Wall Primer to strengthen them. When it is necessary or desired to level the surface, utilize Martins PVA Putty (for interior applications) or Martins Acrylic Putty (suitable for both interior and exterior use). It is essential that the surface is firm, cohesive, clean, dry, and devoid of dust, grease, oil, soap, or mold prior to any application.

Application: For application to the wall: Steel trowel or spatula.
For optimal results, utilize a plastic trowel, spatulas, or a roller.

Finish: Matte.

Dilution: Ready for use; however, if the professional chooses to dilute it, a maximum of 3% with potable water is permissible.

Coats: 1 coat. Note: For highly uneven surfaces, 2 coats are required to address the issue.

NOTE: If the wall exhibits unevenness, we recommend applying two coats.

Drying time: Touch dry: 4 hours / Final: 16 hours / Full cure: 4 days.

Suitable for: Plaster, gypsum, fiber cement, concrete blocks, and fine mortar.

Plaster, gypsum, fiber cement, concrete blocks, and fine mortar.

Granfino Texture #16: covers an area of 5 to 6 m², weighing 23 kg.

Granfino Texture #20: covers an area of 5 to 7 m², weighing 23 kg.

Granfino Texture #25: covers an area of 7 to 9 m², weighing 23 kg.

Granfino Texture #30: covers an area of 7 to 9 m², weighing 23 kg.

Warranty: 3 years for the product and 1 year for color (fading). Additionally, we offer this product with a 5-year warranty, years, distinct pricing with individual quotation.

Available Packaging: 23 kg Barrel / 23 kg 14 L Can / 23 kg 14 L Bucket / 5.6 kg Gallon / 900 ml Gallon.

For additional information regarding this product, please visit:

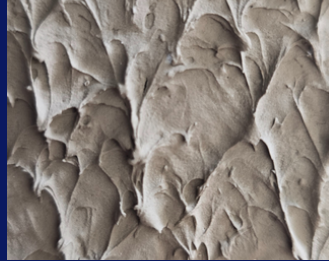


<https://www.martinstintas.com.br/produto/textura-granfino-e-granfino-ultra-20-25-30/>

3. TEXTURES



SLEEK TEXTURE



Product: Silky Finish

Textures that produce smooth effects and unique designs. Ideal for texturing both exterior and interior surfaces of plaster, concrete blocks, exposed concrete, acrylic or putty, fiber cement, and for repainting over PVA or acrylic. Its water-repellent properties enhance the paint's durability. The formulation incorporates components that provide the wall with a distinctive finish, accentuating the texture. When the texture is NATURAL, a finishing coat of paint is required three days post-application. It offers ease of application, strong adhesion, and exceptional homogeneity.

Surfaces: Newly plastered surfaces should be treated with Martins Acrylic Sealer to standardize absorption, thereby reducing paint usage and enhancing both the appearance and durability of the finish. For "weak" surfaces—such as fragile plaster, whitewash, or sun-faded paint—apply Martins Wall Primer to strengthen them. When it is necessary or desired to level the surface, utilize Martins PVA Putty (for interior applications) or Martins Acrylic Putty (suitable for both interior and exterior use). It is essential that the surface is firm, cohesive, clean, dry, and devoid of dust, grease, oil, soap, or mold prior to any application.

Application: For application to the wall: Utilize a trowel, steel spatula, or roller.

For this purpose: trowel, suitable rollers, and brushes.

Finish: Matte.

Dilution: Ready for use; if the professional chooses to dilute, a maximum of 3% with potable water is permitted.

Coats
1 to 2 layers.

Drying
Between coats: 6 to 8 hours. Final drying time: 72 hours. Total cure: 30 days.

Performance
Plaster, gypsum, fiber cement, concrete blocks, and fine mortar: 9 to 11 m², 23 kg. Repainting and sealed surfaces: 9 to 11 m², 23 kg.

Packaging
Bucket/Barrel 23 kg

For additional information regarding this product, please visit:

<https://www.martinstintas.com.br/produto/textura-lisa/>

3. TEXTURES



PROJECTED TEXTURE



Colors: Natural and Customized (according to customer specifications).

Characteristic: A textured coating appropriate for both interior and exterior surfaces, applied using high-pressure spray guns. It offers a range of decorative designs, an exceptional finish, rapid drying, resistance to weathering and fungi, water-repellent qualities, and high yield and coverage.

Surfaces: Newly plastered surfaces should be treated with Martins Acrylic Sealer to standardize absorption, thereby reducing paint usage and enhancing both the appearance and durability of the finish. For application on compromised surfaces—such as weak plaster, whitewash, or sun-faded paint—utilize Martins Wall Primer to strengthen them. When it is necessary or desired to achieve a level surface, employ Martins PVA Putty (for interior use) or Martins Acrylic Putty (suitable for both interior and exterior applications). It is essential that the surface is firm, cohesive, clean, dry, and devoid of dust, grease, oil, soap, or mold prior to any application.

Application: For application to the wall: Steel trowel or spatula.
For optimal results, utilize a plastic trowel, spatulas, or a roller.

Finish: Matte.

Dilution: Ready for use; if the professional chooses to dilute, a maximum of 3% with potable water is permitted.

Coats: 1 coat. Note: For highly uneven surfaces, 2 coats are required to address the issue.
NOTE: If the wall exhibits unevenness, we recommend applying two coats.

Drying time: Touch dry: 4 hours / Final: 16 hours / Full cure: 30 days.

Yield: Plaster, gypsum, fiber cement, concrete blocks, and fine mortar: 8 to 12 m²/23 kg
Repainting and sealed surfaces: 9 to 12 m²/23 kg.

Available Packaging: 23 kg Barrel / 14 L Can / 23 kg Bucket / 16 L Gallon / 5.6 kg Gallon / 900 ml

For additional information regarding this product, please visit:



<https://www.martinstintas.com.br/produto/textura-projetada/>

3. TEXTURES



RUSTIC OR DESIGNER AESTHETIC



Colors: Natural and Customized (according to customer specifications).

Characteristic: Textures that produce rustic effects and unique designs. Ideal for texturing both interior and exterior surfaces of plaster, concrete blocks, exposed concrete, acrylic or putty, fiber cement, and for repainting over PVA or acrylic. Its water-repellent properties enhance the paint's durability by preventing moisture infiltration. The formulations include components that provide the wall with distinctive finishes, improving texture and water resistance, thereby eliminating the necessity for a topcoat. Facilitates easy application, exhibits strong adhesion, and ensures excellent homogeneity.

Surfaces: Newly plastered surfaces should be treated with Martins Acrylic Sealer to standardize absorption, thereby reducing paint usage and enhancing both the appearance and durability of the finish. For "weak" surfaces—such as fragile plaster, whitewash, or sun-faded paint—apply Martins Wall Primer to strengthen them. When it is necessary or desired to level the surface, utilize Martins PVA Putty (for interior applications) or Martins Acrylic Putty (suitable for both interior and exterior use). It is essential that the surface is firm, cohesive, clean, dry, and devoid of dust, grease, oil, soap, or mold prior to any application.

Application: For application to the wall: Steel trowel or spatula.
For optimal results, utilize a plastic trowel, spatulas, or a roller.

Finish: Matte.

Dilution: Ready for use; if the professional chooses to dilute, a maximum of 3% with potable water is permitted.

Coats: one coat.

Drying time: Touch dry: 4 hours / Final: 16 hours / Full cure: 4 days.

Yield: 7 to 10 m² 23Kg.

Available Packaging: 23 kg Barrel / 14 L Can / 23 kg Bucket / 16 L Bucket / 5.6 kg Gallon / 900 ml.

For additional information regarding this product, please visit:

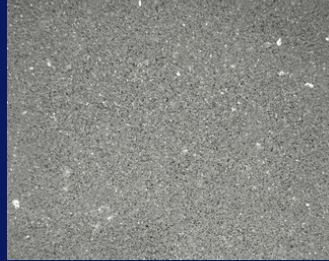


<https://www.martinstintas.com.br/produto/textura-rustica-ou-designer/>

3. TEXTURES



TOPAZ TEXTURE



Colors: Natural and Customized (according to customer specifications).

Characteristic: Textures that produce striking effects. Ideal for texturing both exterior and interior surfaces of plaster, putty, acrylic putty, fiber cement, and for repainting over latex, PVA, or acrylic. Its water-repellent and ultra-resistant properties enhance the durability of the coating by preventing moisture infiltration. The formulation incorporates advanced components along with special stones and larger glitter particles, facilitating a vibrant shine with minimal maintenance, thereby ensuring enhanced surface protection and expedited application.

Surfaces: Newly plastered surfaces should be treated with Martins Acrylic Sealer (in the appropriate color) to ensure uniform absorption, minimize texture consumption, and enhance both the appearance and durability of the finish. For application on compromised surfaces—such as weak plaster, whitewash, or sun-faded paint—utilize Martins Wall Primer to reinforce them. When it is necessary or desired to achieve a level surface, employ Martins PVA Putty (for interior use) or Martins Acrylic Putty (suitable for both interior and exterior applications). It is essential that the surface is firm, cohesive, clean, dry, and devoid of dust, grease, oil, soap, or mold prior to any application.

Application: For application to the wall: Steel trowel or spatula.

For this purpose: Plastic trowel, spatulas.

Finish: Lustrous, rustic with flecks or shimmer.

Dilution: Ready for use; however, if the professional chooses to dilute it, a maximum of 3% with potable water is recommended.

Coats: One coat is adequate; however, depending on the wall's irregularities, a second coat may be required for an improved finish.

Drying time: Touch dry: 6 hours / Final: 72 hours / Full cure: 30 days.

Yield: Plaster, gypsum, PVA filler, acrylic filler, fiber cement, and fine mortar: 5 to 7 m² per 23 kg.

Available Packaging: 23 kg Barrel / 14 L Can / 23 kg Bucket / 16 L Gallon / 5.6 kg Gallon / 900 ml.

For additional information regarding this product, please visit:

 <https://www.martinstintas.com.br/produto/textura-topazio-p20-40-60/>

3. TEXTURES



ZAFIRA NOBLE TEXTURE AND ZAFIRA NOBLE PLUS #25



Colors: Natural and Customized (according to customer specifications).

Characteristic: Textures that produce striking effects. Ideal for texturizing both exterior and interior surfaces of plaster, putty, acrylic putty, fiber cement, and for repainting over PVA or acrylic latex. Its water-repellent and highly resistant properties enhance the durability of the coating by preventing moisture infiltration. The formulation incorporates advanced components and specialized stones that facilitate a brilliant shine without the necessity for washing, thereby offering increased surface protection and expediting the application process.

Surfaces: Newly plastered surfaces should be treated with Martins Acrylic Sealer (in the appropriate color) to ensure uniform absorption, minimize texture consumption, and enhance both the appearance and durability of the finish. For application on compromised surfaces—such as weak plaster, whitewash, or sun-faded paint—utilize Martins Wall Primer to reinforce them. When it is necessary or desired to achieve a level surface, employ Martins PVA Putty (for interior use) or Martins Acrylic Putty (suitable for both interior and exterior applications). It is essential that the surface is firm, cohesive, clean, dry, and devoid of dust, grease, oil, soap, or mold prior to any application.

Application: For application to the wall: Steel trowel or spatula.

For this purpose: Plastic trowel, spatulas.

Finish: Lustrous, rustic with iridescent highlights.

Dilution: Prepared for use.

If required, add up to 3% of potable water.

Coats: One coat is adequate; however, depending on the wall's irregularities, a second coat may be required for an improved finish.

Drying time: Touch dry: 6 hours / Final: 72 hours / Full cure: 30 days.

Yield: Plaster, gypsum, PVA filler, acrylic filler, fiber cement, and final coat: 5 to 8 m² / 23 kg.

Available Packaging: 23 kg Barrel / 14 L Can / 23 kg Bucket / 16 L Gallon / 5.6 kg Gallon / 900 ml Gallon.

For additional information regarding this product, please visit:



<https://www.martintintas.com.br/produto/textura-zafira-nobre-e-zafira-nobre-plus-25/>

4. NATURAL STONES



CRYSTAL LINE NATURAL GEMSTONES



EXTERIOR AND INTERIOR



ELEGANCE AND
REFINEMENT



SIMPLE APPLICATION



SUPERB FINISH

MARTINS TINTAS introduces its CRYSTAL line, featuring a natural stone texture that enhances the market with refinement and sophistication, embodying a classic style with a more noble and inviting appearance. Art serves as a vital instrument for transformation. The versatility of this product presents 12 remarkable combinations, and this revolution in elegance and nobility renders environments unforgettable. The interplay of timelessness and contemporary design creates a harmonious space, free from the constraints of fleeting fads or trends.

The minerals offer a distinctive, impeccable finish, with their attributes evident at first glance. This texture is crafted to convey experiences of well-being and satisfaction. The natural stones comprising the product exhibit exceptional durability, preserving their original qualities for an extended period.

The application is performed exclusively with a stainless steel trowel to prevent oxidation (rust) and potential contamination during the process. Given that this product is composed of natural raw materials, we advise against mixing different batches in the same area due to the significant risk of color variations.

Water-repellent finish suitable for both indoor and outdoor applications. We advise applying a primer that corresponds in color to the texture.

Touch dry in four hours.

FINAL DRYING TIME: 72 HOURS

COMPLETE CURING TIME: 120 DAYS (WHITEN WITH WATER)

• TOOLS: STAINLESS STEEL TROWEL AND SPATULA

PERFORMANCE

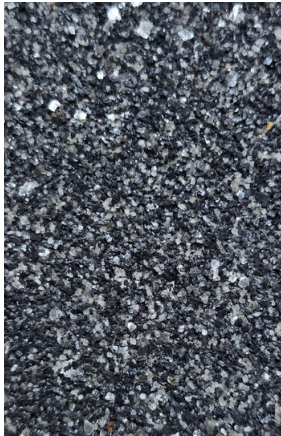
Bucket or Barrel of Natural Stones (22kg) - 4 to 5m²; Bucket or Barrel of Primer (15L) - up to 75m². Proportion: For every 15 buckets or barrels of natural stones (22kg each), utilize 1 bucket of primer (15L). Gallon of Natural Stones (5.6kg) - 1 to 1.3m²; Gallon of Primer (3.6L) - up to 18m².

NOTE - This product requires 120 days to achieve complete curing as a result of exposure to water (whitening). Should the client prefer to circumvent this issue, a colorless, solvent-based resin may be applied no sooner than four days following the Crystal application.

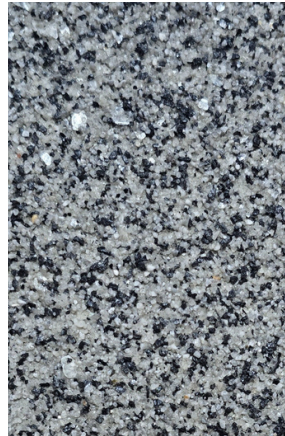
For additional information regarding this product, please visit:

<https://www.martintintas.com.br/produto/linha-crystal-pedras-naturais/>

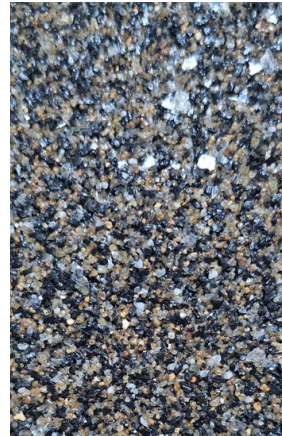
4. NATURAL STONES



CRYSTAL MOSCOW



CRYSTAL PARIS



CRYSTAL LONDON



CRYSTAL AMSTERDAM



CRYSTAL LISBON



CRYSTAL PRAGUE



CRYSTAL ROME



CRYSTAL ATHENS



CRYSTAL BERLIN



CRYSTAL
MATRIARCHS



CRYSTAL BRUSSELS



CRYSTAL VIENNA



The leading option in texture and decorative effects, offering the best cost-benefit ratio in Brazil!

4. NATURAL STONES



CRYSTAL BLACK FINISH



EXTERIOR AND INTERIOR



ELEGANCE AND
REFINEMENT



SIMPLE APPLICATION



SUPERB FINISH

Product: CRYSTAL BLACK FINISH

Textures that produce striking effects, ideal for texturizing both exterior and interior surfaces of plaster, putty, acrylic putty, fiber cement, and for repainting over PVA or acrylic latex. Its water-repellent and highly resistant properties enhance the durability of the coating. The formulation incorporates advanced components along with special stones and larger glitter particles, enabling a vibrant shine without the necessity for washing, thereby offering enhanced surface protection and expediting the application process. Please be advised that this product should already be in the desired color.

Finish

Vibrant, rustic, adorned with hints of sparkle.

Application Process:

Apply the product to the desired surface with a spatula and a steel trowel, ensuring to remove any excess while being cautious not to strip away too much material from the surface. Conclude by using a plastic trowel to apply the product in circular motions.

NOTE: For extensive surfaces, enlist the assistance of additional professionals to prevent seams.

Dilution

Ready for use. If needed, dilute up to 3% with potable water.

Coats

One coat is adequate; however, depending on the wall's unevenness, a second coat may be required for an improved finish.

Drying

Touch dry: 6 hours. Final cure: 72 hours. Full cure: 30 days.

Packaging: 22 kilograms.

Performance

Plaster, gypsum, PVA compound, acrylic compound, fiber cement, and fine mortar. 6.5 to 8.5 m²/23 kg

For additional information regarding this product, please visit:



<https://www.martintintas.com.br/produto/textura-crystal-black/>

4. NATURAL STONES



CRYSTAL WHITE FINISH



EXTERIOR AND INTERIOR



ELEGANCE AND
REFINEMENT



SIMPLE APPLICATION



SUPERB FINISH

Product: Crystal White Finish

Textures that produce striking effects. Ideal for texturizing both exterior and interior surfaces of plaster, putty, acrylic putty, fiber cement, and for repainting over PVA or acrylic latex. Its water-repellent and highly durable properties enhance the longevity of the coating. The formulation incorporates advanced components along with special stones and larger glitter particles, enabling a vibrant shine without the necessity for washing, thereby enhancing surface protection and expediting application. Please note that this product should already be in the desired color.

Finish

Vibrant, rustic, adorned with hints of sparkle.

Application Process:

Apply the product to the desired surface with a spatula and a steel trowel, ensuring to remove any excess while being cautious not to strip away too much material from the surface. Conclude by using a plastic trowel to apply the product in circular motions.

NOTE: For extensive surfaces, enlist the assistance of additional professionals to prevent seams.

Dilution

Ready for use. If needed, dilute up to 3% with potable water.

Coats

One coat is adequate; however, depending on the wall's unevenness, a second coat may be required for an improved finish.

Drying

Touch dry: 6 hours. Final cure: 72 hours. Full cure: 30 days.

Packaging: 22 kilograms.

Performance

Plaster, gypsum, PVA compound, acrylic compound, fiber cement, and fine mortar. 6.5 to 8.5 m²/23 kg

For additional information regarding this product, please visit:



<https://www.martintintas.com.br/produto/textura-crystal-white/>

5. Solvent Pipeline



STANDARD SYNTHETIC ENAMEL



Rapid Drying



Simple Application



High Gloss



Exterior and Interior

STANDARD SYNTHETIC ENAMEL

Martins Gloss Synthetic Enamel is a premium, durable product designed for both interior and exterior applications. It is ideal for painting and repainting surfaces such as:

– Ferrous metals – Galvanized steel – Aluminum – Wood – Masonry – PVC. Creates a film that provides extended protection, maintaining luster and a fresh appearance for an extended period. It features rapid drying, superior finish, exceptional coverage, and straightforward application, while also delivering outstanding yield and spreadability.

Recommended Instruments

- Brush
- Gentle brush
- Foam roller
- Spray gun (30 to 35 psi)

Dilution

Brush, Paintbrush, Roller

Recommended Solvent: MARTINS RÁS

– Dilution: 10% to 20% across all coats. Spray gun:

Recommended Solvent: MARTINS RÁS

– Dilution: 20% to 25% across all coats

Drying

Touch dry: 2 hours

- Between coats: 4 to 6 hours
- Final: 10 hours

Completed Yield

- 900 mL → covers up to 6 m² of finished area
- 3.6 L → covers up to 20 m² when finished
- 18 L for areas up to 100 m² completed

Number of Coats

Two to three coats (However, depending on the type, surface condition, and color, additional coats may be necessary).

Recommended Funds

- Iron and steel: Red Lead Oxide Primer / Corrosion Inhibitor
- Galvanized: Solvent-Based Galvanized Primer
- Wood: Matte White Leveling Primer for Timber

For additional information regarding this product, please visit:

<https://www.martinstintas.com.br/produto/esmalte-sintetico-standard/>

5. Solvent Pipeline



SYNTHETIC ENAMEL DIRECTLY APPLIED TO RUST.



Removes the necessity for a background.



Anti-corrosive



Automotive Engineering



Ultra-Resistant

Synthetic enamel directly applied to rust.

Martins Direct-to-Rust Synthetic Enamel is an anti-rust enamel that can be applied directly to both clean and rusty iron surfaces without the need for a primer. It effectively prevents and halts the rusting process. Its formulation features Dual Technology, providing High Water Repellency and Anti-Corrosive Action, and allows for dilution with standard turpentine, thus negating the necessity for a specific solvent. It offers excellent coverage and yield, making it suitable for both indoor and outdoor applications.

APPLICATION INSTRUMENT:

Extensive areas: Foam roller or spray gun.

Small areas: Utilize a brush with soft bristles.

DRYING:

Touch dry: 1 hour.

Between coats: four to six hours.

Final drying time: 24 hours, contingent upon ambient temperature, humidity, and air circulation. (Drying times between coats and final drying may fluctuate based on the applied layer, substrate, and prevailing weather conditions).

COATS:

2 to 3 for brush or paintbrush

4 for wool or foam roller and spray gun. **IMPORTANT:** Surface protection is contingent upon the application of Carola Direct Rust Marine Enamel. Always ensure the appropriate number of coats is applied based on the tool utilized.

COVERAGE PER COAT:

18-liter can: Covers up to 180 m² per coat. 3.6-liter gallon: Covers up to 36 m² per coat.

0.900 liter can: Covers up to 9 m² per coat.

Depending on the application conditions and the type or condition of the surface.

DILUTION:

Thoroughly combine the product using a plastic, metal, or wooden spatula resembling a ruler, prior to, during, and after dilution and application.

Brush or paintbrush: Prepared for use.

Wool or foam roller: 5 to 10% with Thinner D.M 2800. Spray gun:

Decrease the volume by 15% to 20% using Thinner D.M. 2800.

For additional information regarding this product, please visit:

<https://www.martinstintas.com.br/produto/esmalte-sintetico-direto-na-ferrugem/>

5. Solvent Pipeline



AUTOMOTIVE AND INDUSTRIAL SYNTHETIC ENAMEL



Secagem Ultra Rápida



Excelente Cobertura



Super Proteção



Maior Resistência

Automotive and industrial synthetic enamel

Industrial/Automotive Synthetic Enamel is a premium enamel that delivers exceptional coverage, high gloss, and yield. It boasts superior weather resistance and durability, ensuring effective protection for agricultural vehicles, trucks, tractors, and machinery. Additionally, it is applicable to metal appliances such as stoves, refrigerators, and washing machines. This alkyd resin-based paint provides high resistance, an outstanding finish, and rapid drying. It is ideal for both general and partial painting of vehicles, agricultural implements, industrial machinery, as well as wood and metal components.

APPLICATION INSTRUMENT:

Extensive areas: Foam roller or spray gun.

Small areas: Utilize a brush with soft bristles.

DRYING:

Touch dry: 20 to 30 minutes.

Between coats: 20 to 30 minutes.

For processing: 4 to 6 hours.

Final drying time: 24 hours, contingent upon ambient temperature, humidity, and air circulation. (Drying times between coats and final drying may fluctuate based on the applied layer, substrate, and prevailing weather conditions).

COATS:

2 to 3 layers.

COVERAGE PER COAT:

18-liter can: Covers up to 200 m² per coat. 3.6-liter gallon: Covers up to 40 m² per coat.

0.900 liter can: Covers up to 10 m² per application.

Depending on the application conditions and the type or condition of the surface.

DILUTION:

Thoroughly combine the product using a plastic, metal, or wooden spatula resembling a ruler, prior to, during, and after dilution and application.

Brush, Foam roller: 5 to 10% with Thinner D.M 2800 Spray gun:

from 20% to 30% with Thinner D.M. 2800.

For additional information regarding this product, please visit:

<https://www.martinstintas.com.br/produto/esmalte-sintetico-industrial-automotivo/>

5. Solvent Pipeline



SOLVENTS

- MARTIN'S CHANNEL
- THINNER D.M. 2137
- THINNER D.M. 2116
- THINNER D.M. POLYURETHANE
- THINNER D.M. 2800
- DEGREASING AGENT

Product: Solvents

Martin's Channel

This product is designed for diluting Martins Standard Synthetic Enamel, which is fully compatible with our synthetic paints, ensuring an exceptional finish and enhanced paint durability.

INSTRUCTIONS FOR USE:

This product is suitable for both indoor and outdoor use. It can be utilized for thinning synthetic paints and for cleaning surfaces.

PACKAGING:

Can: 18 liters Gallon: 5 liters Can: 900 ml Composition: Aliphatic Hydrocarbons

Thinner D.M. 2116

It is a transparent, colorless, flammable substance with a distinctive odor, suitable for cleaning tools and surfaces.

INSTRUCTIONS FOR USE:

Thinner D.M. 2116 is designed for the cleaning of machines, paint guns, brushes, paintbrushes, and rollers utilized in the painting process. It is highly effective for cleaning and degreasing surfaces. We advise against using this product for paint dilution.

PACKAGING:

Can: 18 liters Gallon: 5 liters Can: 900 ml Composition: Chemicals: Hydrocarbons, alcohols, esters, and ketones. * Free from chlorinated solvents and benzene.

Thinner D.M. 2800

It is a transparent, colorless, flammable substance with a distinctive odor.

INSTRUCTIONS FOR USE:

Recommended for thinning wood sealers, synthetic automotive paints, nitrocellulose-based paints (Duco), and primers.

PACKAGING:

Can: 18 liters Gallon: 5 liters Can: 900 ml Composition: Chemicals: Hydrocarbons, alcohols, esters, and ketones. * Free from chlorinated solvents and benzene.

Thinner D.M. 2137

It is a transparent, colorless, flammable substance with a distinctive odor.

INSTRUCTIONS FOR USE:

Recommended for thinning wood sealers, synthetic automotive paints, nitrocellulose-based paints (Duco), acrylic paints, and primers. It exhibits high resistance to whitening, ensuring an exceptional finish and gloss retention.

PACKAGING:

Can: 18 liters Gallon: 5 liters Can: 900 ml Composition: Chemicals: Hydrocarbons, alcohols, esters, and ketones. * Free from chlorinated solvents and benzene.

Thinner D.M. Polyurethane

It is a transparent, colorless, flammable substance with a distinctive odor.

INSTRUCTIONS FOR USE:

Recommended for the dilution of polyurethane-based products.

PACKAGING:

Can: 18 liters Gallon: 5 liters Can: 900 ml Composition: Chemicals: Hydrocarbons, alcohols, esters, and acetates. * Free from chlorinated solvents and benzene.

Degreasing Agent

It is a transparent, colorless, flammable substance with a distinctive odor.

INSTRUCTIONS FOR USE:

Recommended for eliminating residues such as grease, oil, or other contaminants that may compromise the optimal adhesion of primers, fillers, and/or the final paint finish.

Dampen a cloth or flannel with the product and wipe it across the surface.


PACKAGING:

Can: 18 liters Gallon: 5 liters Can: 900 ml Composition: Aliphatic Hydrocarbons * Free from chlorinated solvents and benzene.


For additional information regarding this product, please visit:

<https://www.martinstintas.com.br/produto/solventes/>



martinstintas 

martinstintas 

(19) 3665-5378 

www.martinstintas.com.br 