



*Find the
color of
your
dreams!*





Premium Sovereign Acrylic

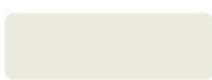
Category: Premium. **Environment:** Exterior and Interior.
Attributes: High-performance product, optimal Protection against environmental elements and fungal infestations.
 It produces no odor.

Coverage: 18L covers an area of up to 130m².
 3.6L encompasses an area of up to 26m² of finished space.

Certification: Inmetro



SUPER WHITE



YES



EGYPTIAN COTTON



PEARL



STRAW



IVORY



SAND



SUEDE



BRONZE LEGEND



PEACH



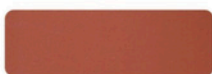
TALK



ELEPHANT



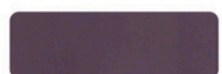
CAPPUCCINO



TERRACOTTA



MIDNIGHT BLUE



EGGPLANT



Standard Performance Acrylic

Category: Standard. **Environment:** Outdoor and Indoor.
Attributes: A product characterized by advanced technology and innovation.
 Extensive coverage, superior finish.
 It produces no odor.

Coverage: 18L covers an area of up to 170m² when finished.
 3.6L accommodates up to 33m² of finished area.

Certification: Inmetro



SUPER WHITE



YES



EGYPTIAN COTTON



PEARL



STRAW



IVORY



SAND



SUEDE



BRONZE LEGEND



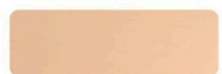
TALK



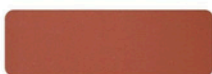
ELEPHANT



CAPPUCCINO



PEACH



TERRACOTTA

Due to the application of ink onto paper, the colors in this catalog may exhibit minor tonal variations.
 and brightness concerning the final color applied.

For improved visualization, apply a small amount of the selected color to the area designated for painting.



Professional Acrylic

Category: Economic. **Environment:** Indoor.

Attributes: Indoor product, cost-effective and High quality. Matte finish, easy application, low odor, and excellent coverage.

Coverage: 18L covers an area of up to 225m² per coat.
3.6L encompasses an area of up to 45m² of finished space.



WHITE



YES



PEARL



STRAW



IVORY



TALK



PEACH



SAND



SUEDE



CONCRETE



KIWI GREEN



ROSA AÇÁ

Acrylic Enhancement Liquid Rubber



Acrylic Enhancement Liquid Rubber

Category: Premium. **Environment:** Exterior and Interior.

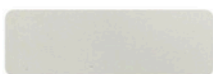
Attributes: Premium, flexible ink.

Prevents the reemergence of cracks. Mitigates the effects of marine air and precipitation. Inhibits the proliferation of algae and fungi. Washable and devoid of odor.

Coverage: 18L covers an area of up to 75m².
3.6L encompasses an area of up to 15m² of finished space.



SUPER WHITE



CROMIO



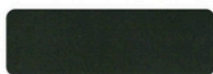
TALK



ELEPHANT



INDIA INK



THERE
FORE

Due to the application of ink onto paper, the colors in this catalog may exhibit minor variations in tone and brightness when compared to the final applied color.

For improved visualization, apply a small amount of the selected color to the area designated for painting.



Scan the QR code to access comprehensive information regarding our products and updates.
Alternatively, you may visit our website: www.martinstintas.com.br.

Floors and Facades



Category: Premium. **Environment:** Exterior and Interior.
Attributes: Product crafted with superior quality. Technology engineered for the application and reapplication of cement flooring. Offers exceptional traffic resistance, remarkable durability, and outstanding coverage and yield.

Coverage:

Colors - 18L for areas up to 120m² - 3.6L for areas up to 24m² when finished.

White - 18L for areas up to 70m² - 3.6L for finished areas up to 14m²



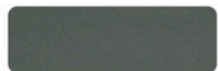
WHITE



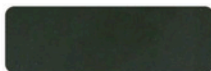
GRAY



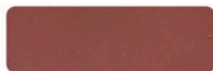
CONCRETE



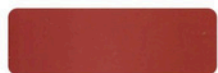
LEAD



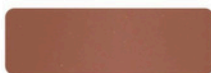
THEREFORE



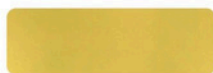
RED



RED SECURITY



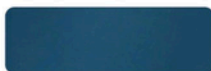
CERAMICS



YELLOW HIGHLIGHTING



GREEN



BLUE



BROWN



Resin for Roofing

Category: Premium. **Environment:** Exterior and Interior.
Attributes: Product featuring a glossy finish that It offers protection and durability, along with exceptional waterproofing capabilities. It safeguards and enhances both interior and exterior surfaces, including tiles, exposed bricks, natural stone, and more.

Coverage: 18L covers an area of up to 225m².

3.6L encompasses an area of up to 45m² of finished space.



COLORLESS



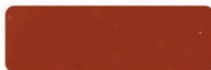
WHITE



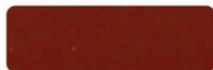
CHAMPAGNE



GRAY



CERAMIC TILING



RED OXIDE

WATER-SOLUBLE SUPPLEMENTS

WALL PREPARATION PRIMER



INTERNAL AND EXTERNAL

Fragile plaster, gypsum-based plaster, lightweight mortar, wallboard, gypsum panels.

ENHANCES INK
ADHESION.

WATER-BASED

MINIMAL
ODOR

REPAIRS LOOSE
PARTICLES

ACRYLIC COATING



INTERNAL AND EXTERNAL

New plaster, fiber cement, exposed concrete, concrete masonry units.

Enhanced saddle fixation and consistency streamline application and foster cost savings.

ENHANCED PAINT
ADHESION

SEALS AND UNIFIES
THE PLASTERWORK

FACILITATES THE
APPLICATION OF FILLERS.

ENCOURAGES INK
CONSERVATION.

PUTTY

CERTIFICATION: INMETRO



INTERIOR

Masonry, fiber cement, plaster, gypsum, drywall.

IMMACULATE
WALL

EXTENDED
PROCESSING TIME

EXTREMELY
SOFT

ELEVATED FILLING
CAPACITY

ACRYLIC FILLER

CERTIFICATION: INMETRO



Interior and exterior masonry, fiber cement, plaster, gypsum board, drywall.

SMOOTH
SURFACE

EXTREMELY
DURABLE

SIMPLE TO APPLY
AND SAND

ELEVATED FILLING
CAPACITY

TEXTURES

SMOOTH FINISH - RUSTIC FINISH - GRANFINO -
GRAFIMARTINS-BROMATO-PROJECTED TEXTURE.



INTERNAL AND EXTERNAL

Masonry, fiber cement, plaster, concrete, gypsum, PVA
interior filler, acrylic exterior filler.

ELEGANCE AND
REFINEMENT

WATER-RESISTANT

ORNAMENTAL
IMPACTS

EXCELLENT
PERFORMANCE

MARTINSPREN (WALL AND SLAB) 10-IN-1 WATERPROOFING



Interior and exterior plastering, concrete,
fiber cement, and slabs.

PREVENTS
FRACTURES

ACCEPTS
PIGMENTATION.

ERADICATES
MICROCRACKS

RESILIENT TO
SUNSHINE AND RAIN



Martins Fabricação de Tintas LTDA-ME
Av. Geraldo Marra nº 100 - Distrito Industrial II
CEP: 13.739-030 - Mococa/SP

  martinstintas

 www.martinstintas.com.br

